

# HOTEL

GERMANY | FRANCE | TAIWAN | TURKEY

Tegt Lisa-Marie  
Testiere Inès  
Uçak Emel  
Weng Huichuan

# Hotel criteria

room size

categorie	single room	double room
1 star	08 m <sup>2</sup>	12 m <sup>2</sup>
2 stars	12 m <sup>2</sup>	16 m <sup>2</sup>
3 stars	14 m <sup>2</sup>	18 m <sup>2</sup>
4 stars	16 m <sup>2</sup>	22 m <sup>2</sup>
5 stars	18 m <sup>2</sup>	26 m <sup>2</sup>

## EVALUATION CRITERIA

- reception & service
- room
- gastronomy
- events area
- free time
- quality and online activities

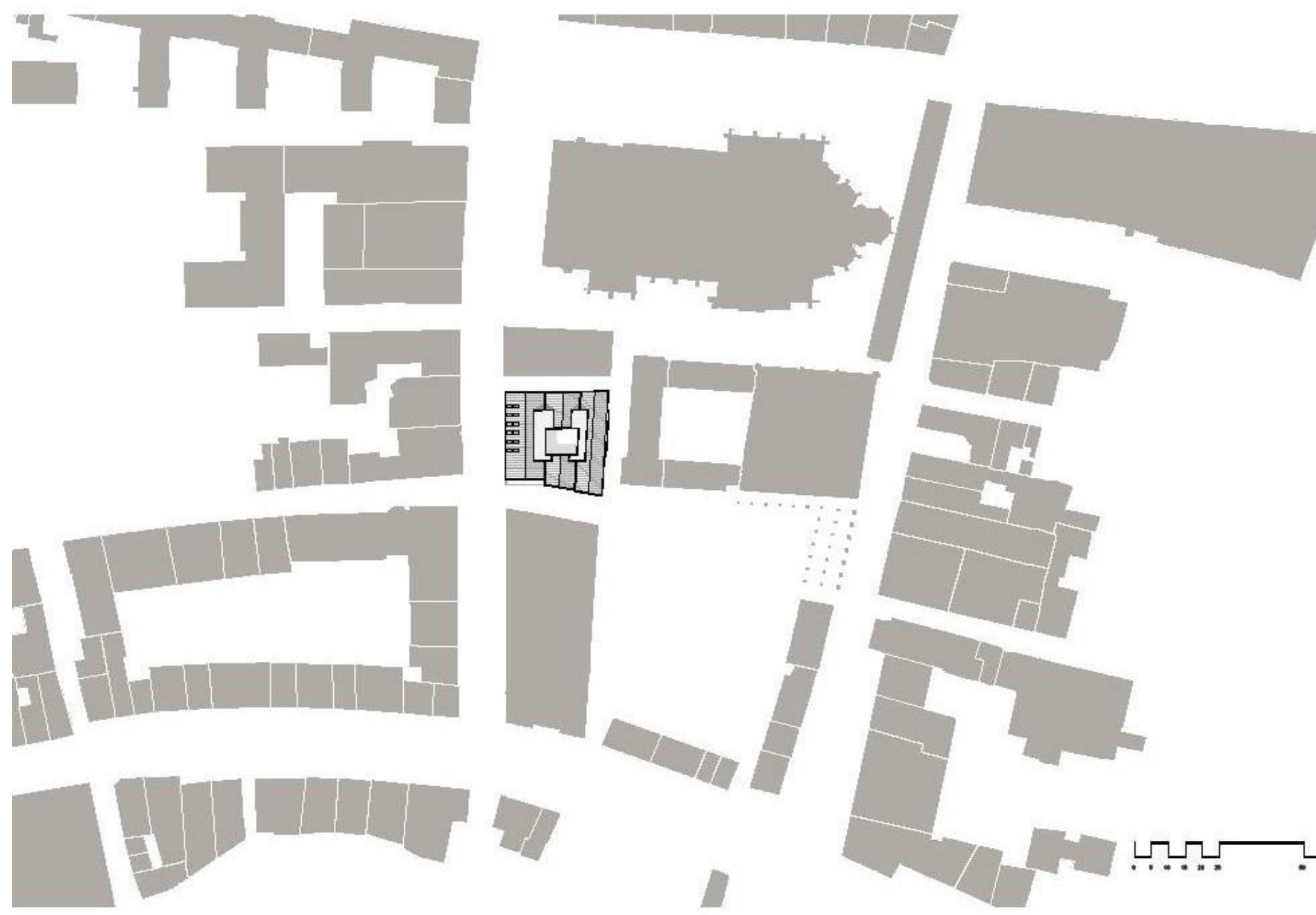
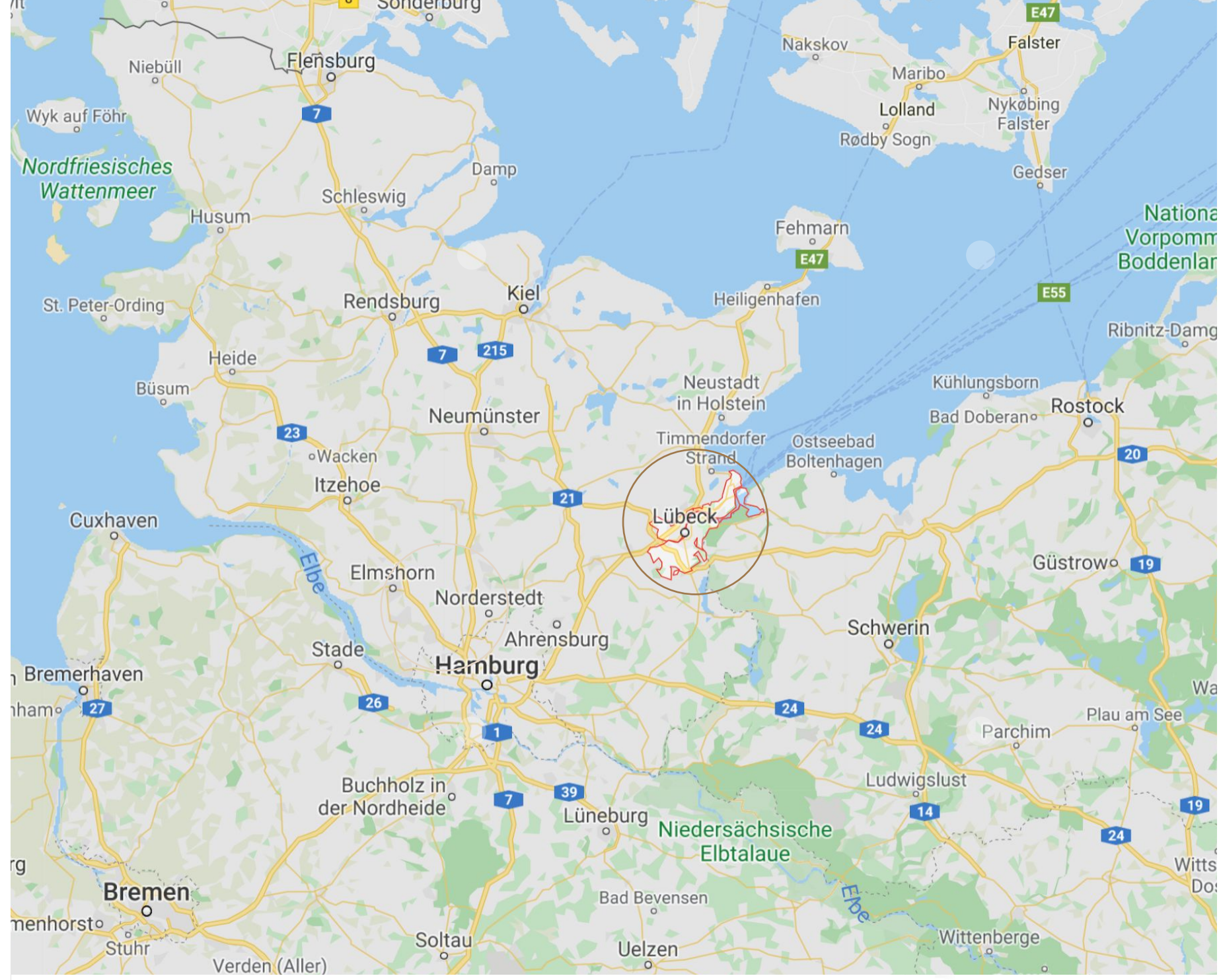


LÜBECK

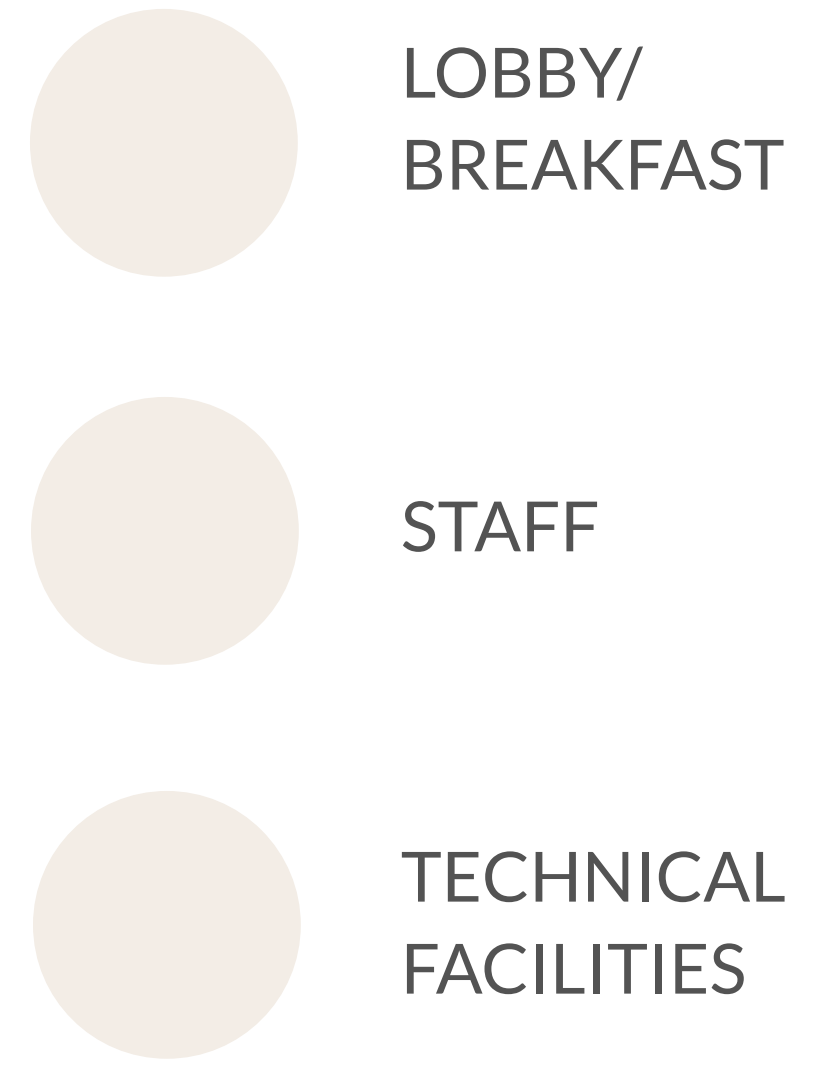
---

# Germany

MOTEL ONE



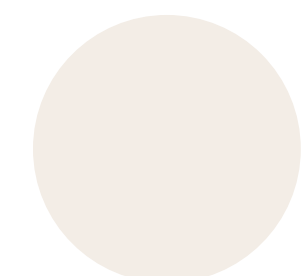
- northern Germany
- hanseatic city Lübeck
- at the market



- based on historical buildings and town plan  
- colonnade



HOTEL ROOMS



COURTYARD

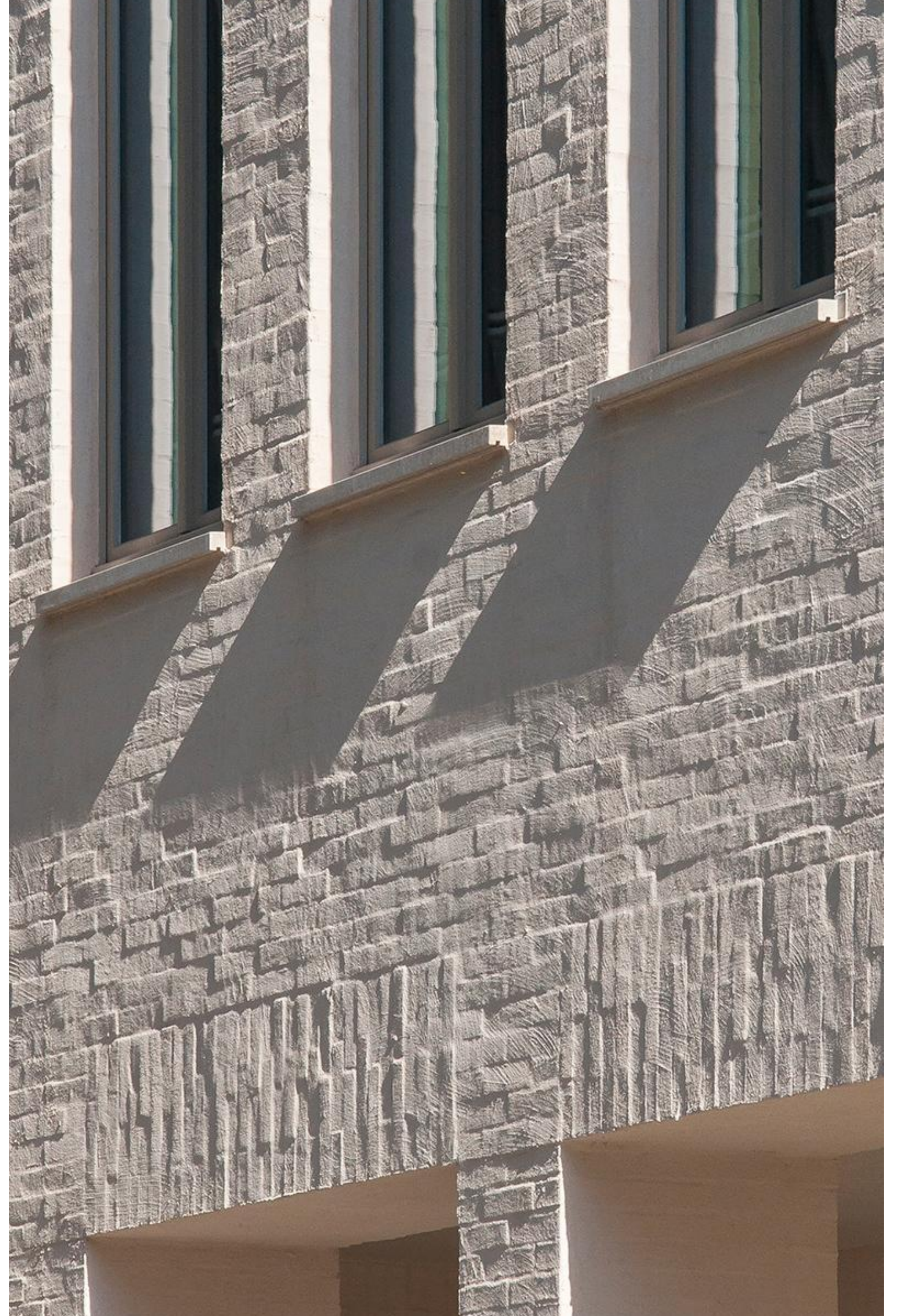
- intimate outdoor space in the middle of the city



COFFEY

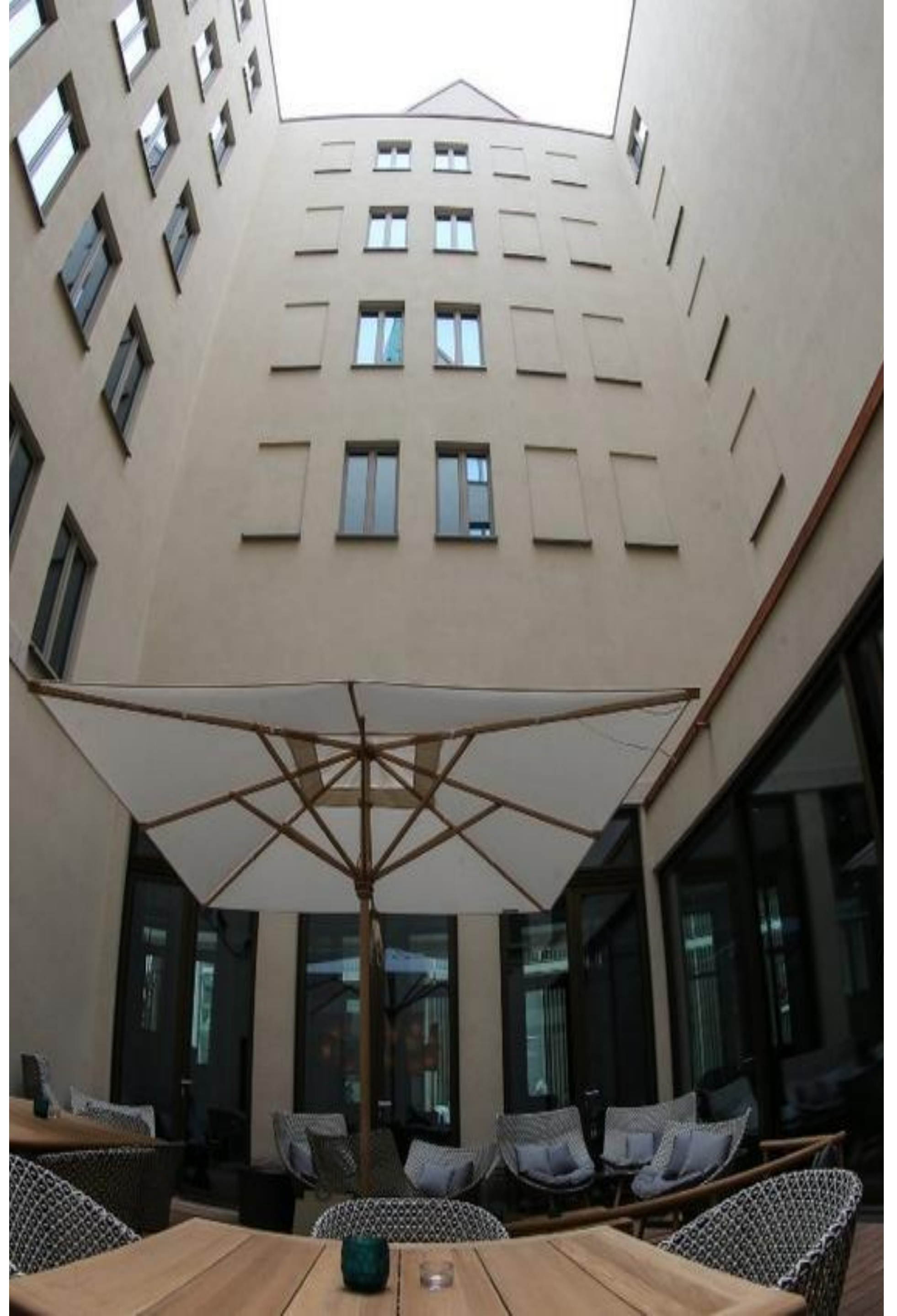
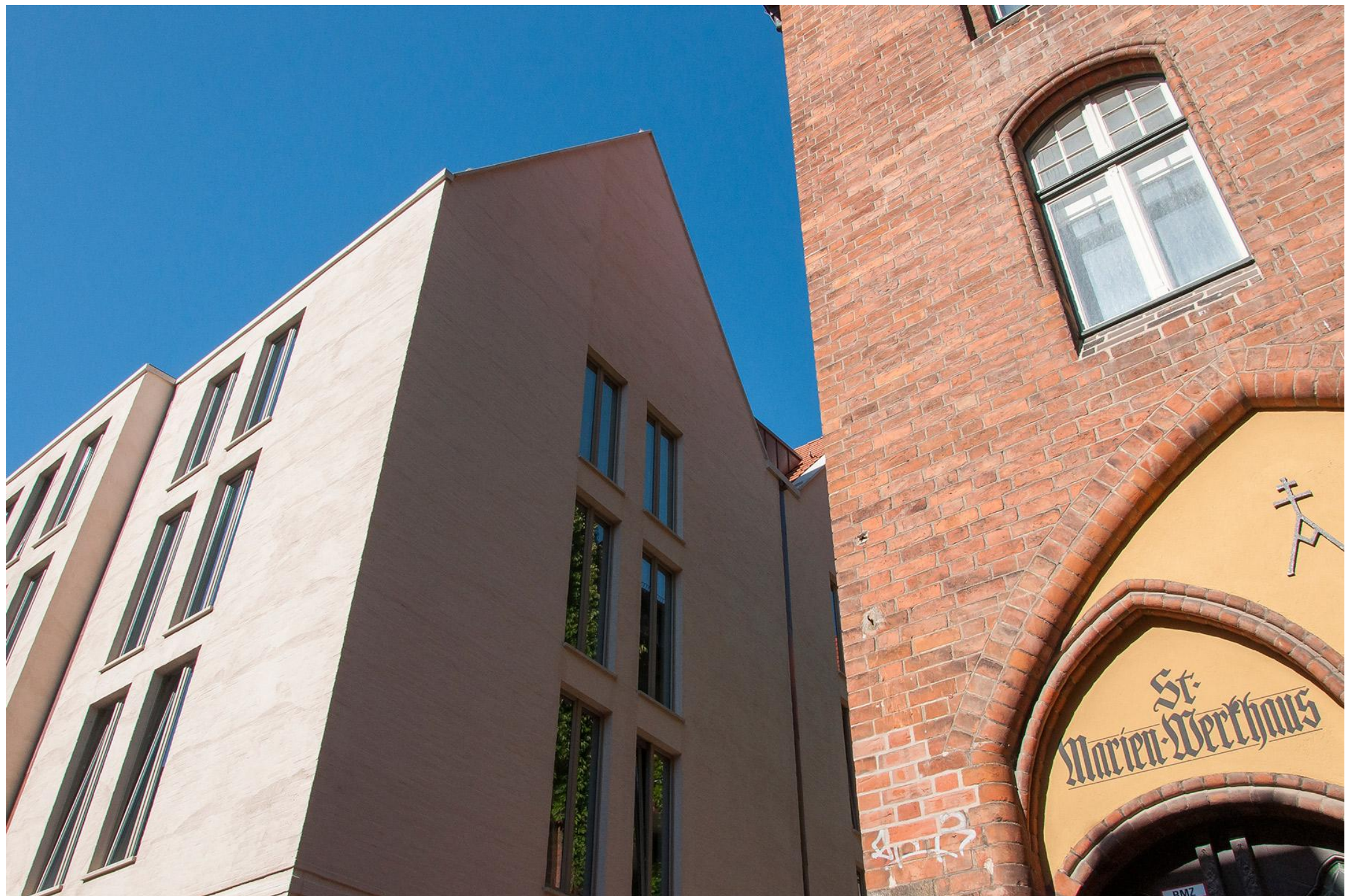
mytel done

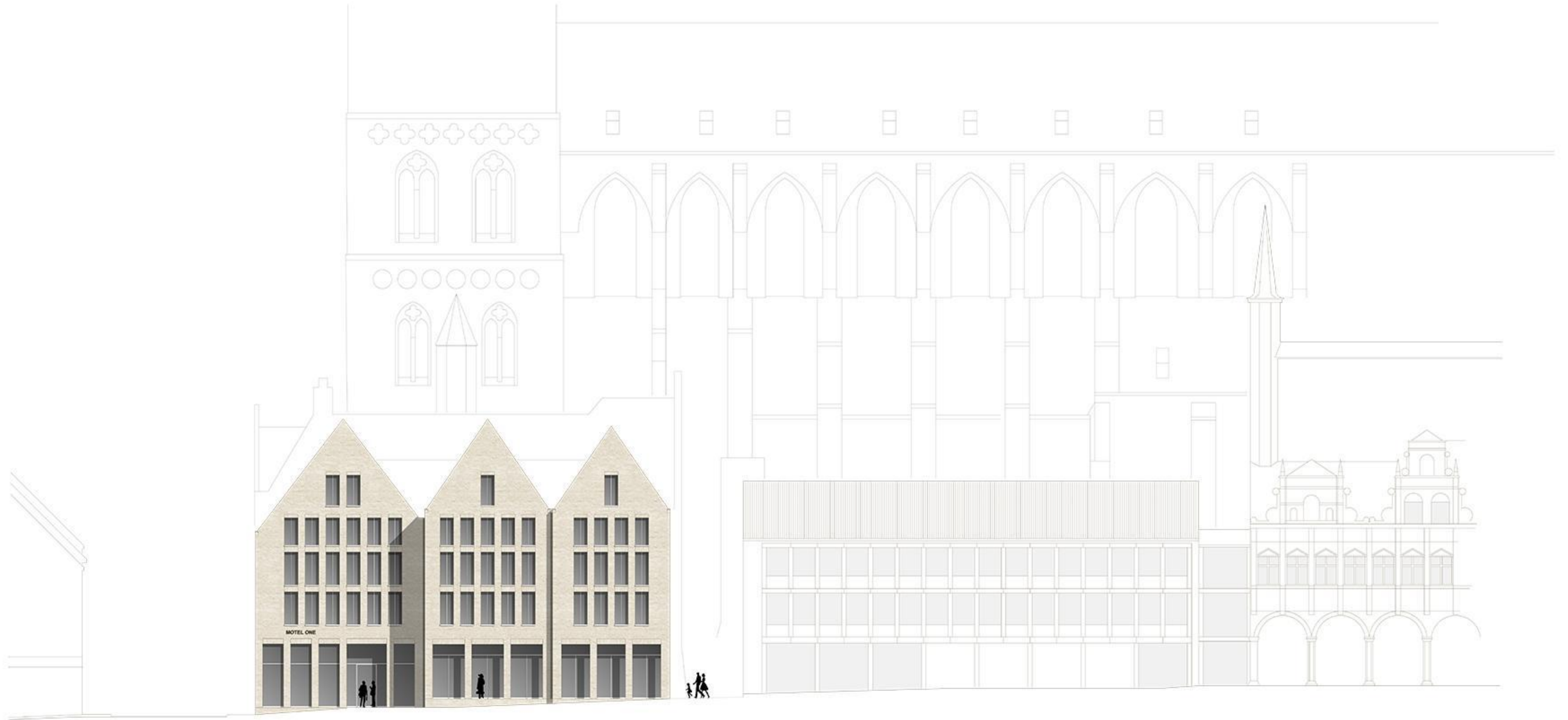
CONDIT





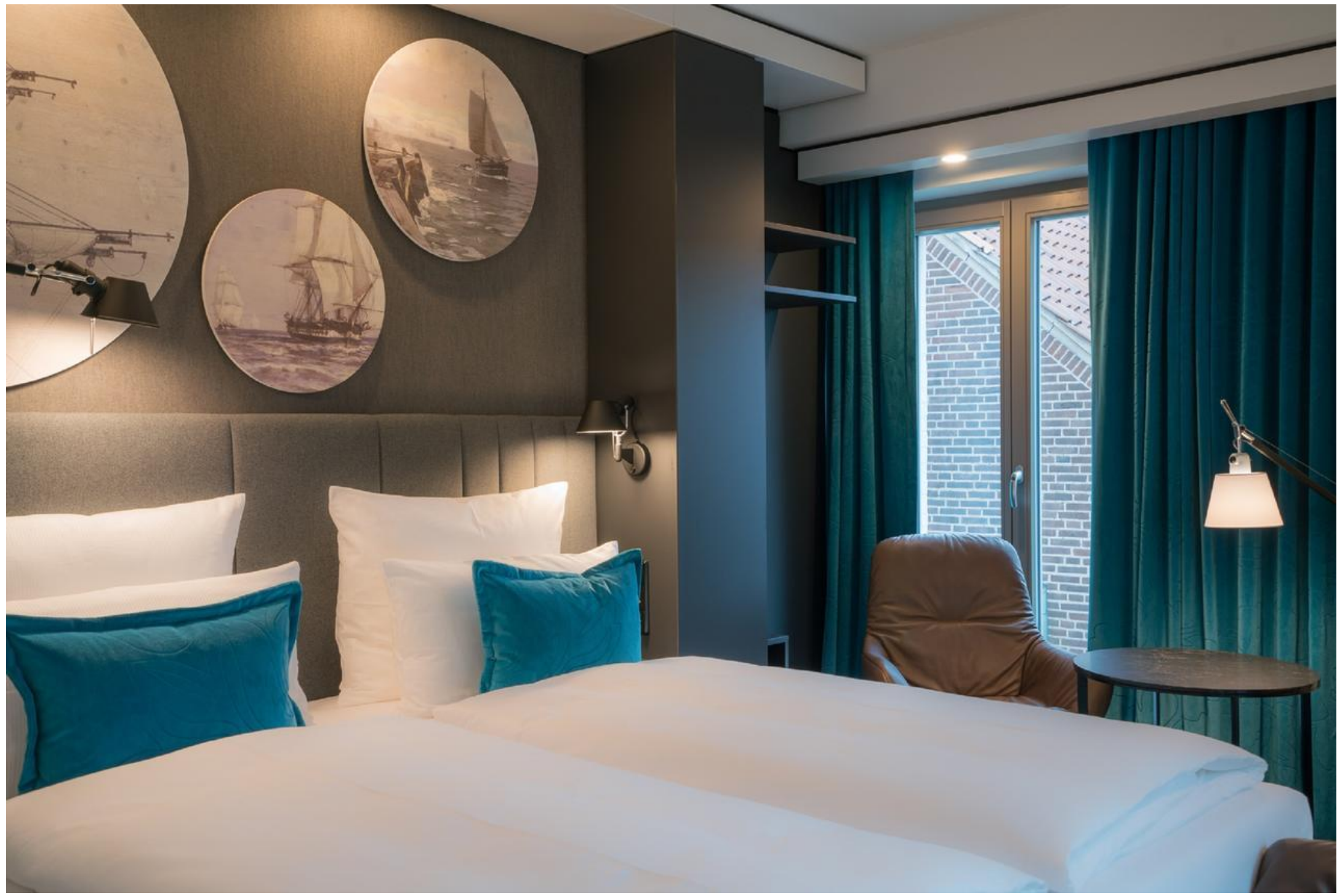










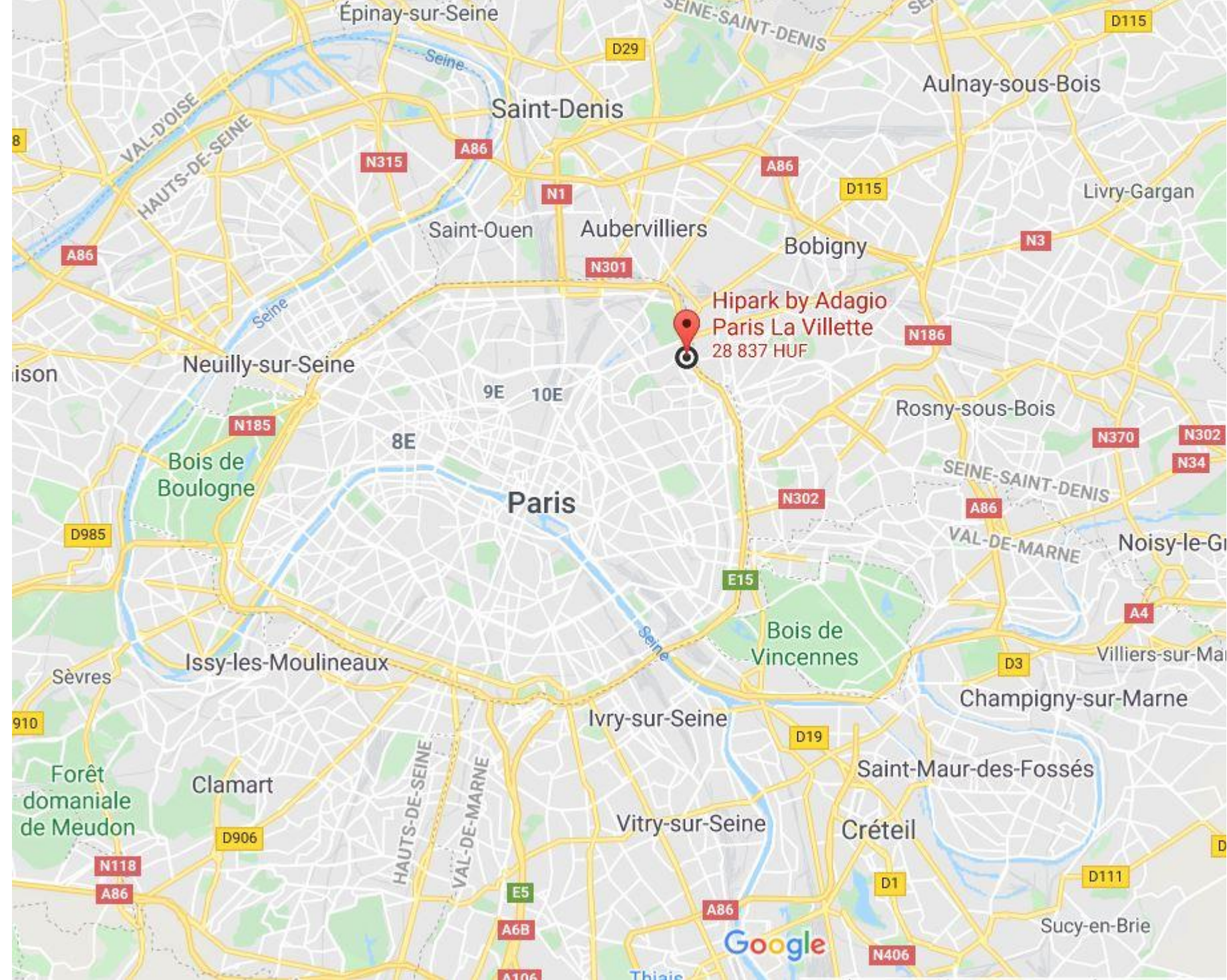




PARIS

# France

HIPARK HOTEL



Manuelle Gautrand Architecte

Paris in the 19<sup>th</sup> arrondissement

125 rooms -Surface: 5 000 m<sup>2</sup>

Cost: 9 500 000 €



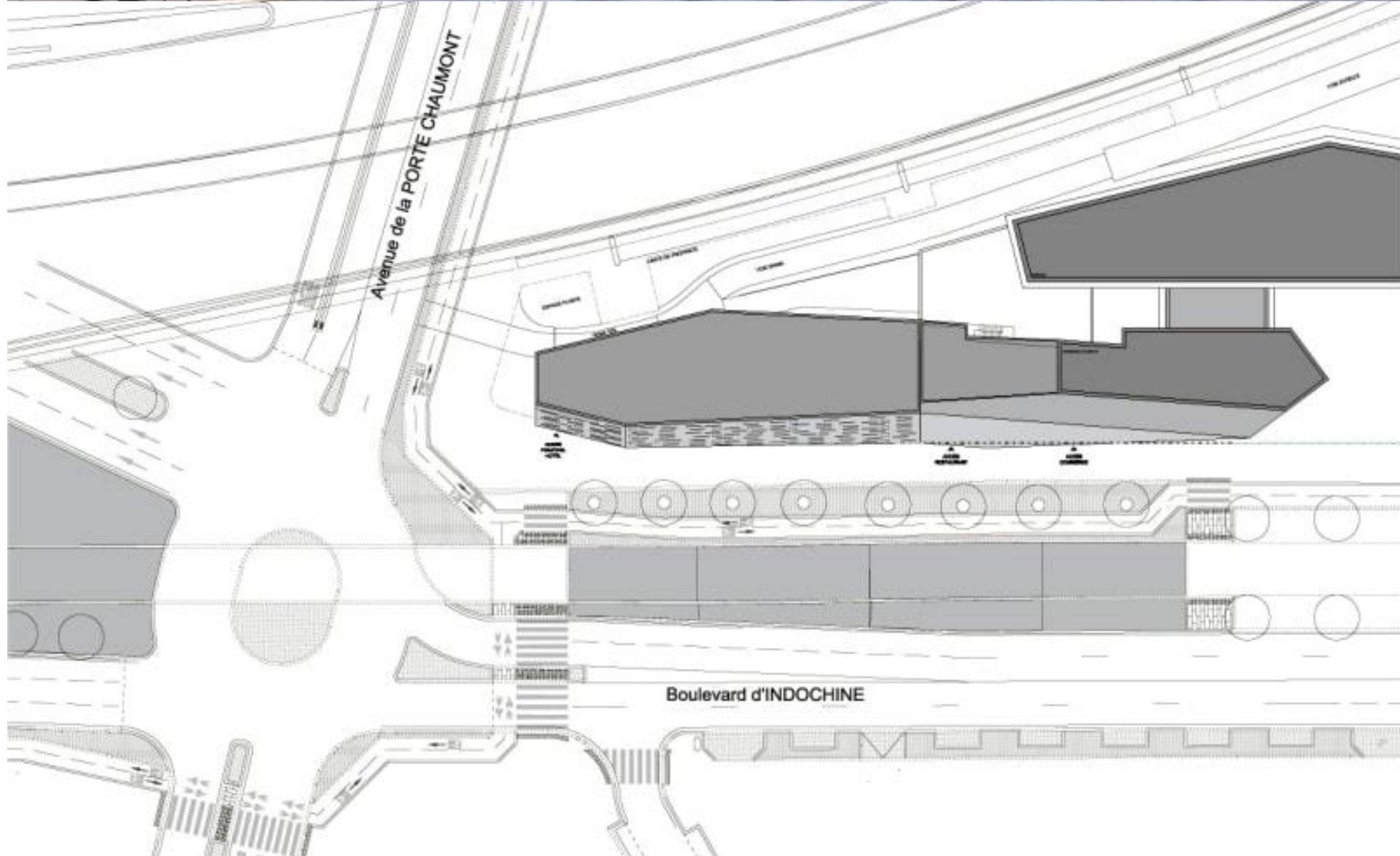


SITE

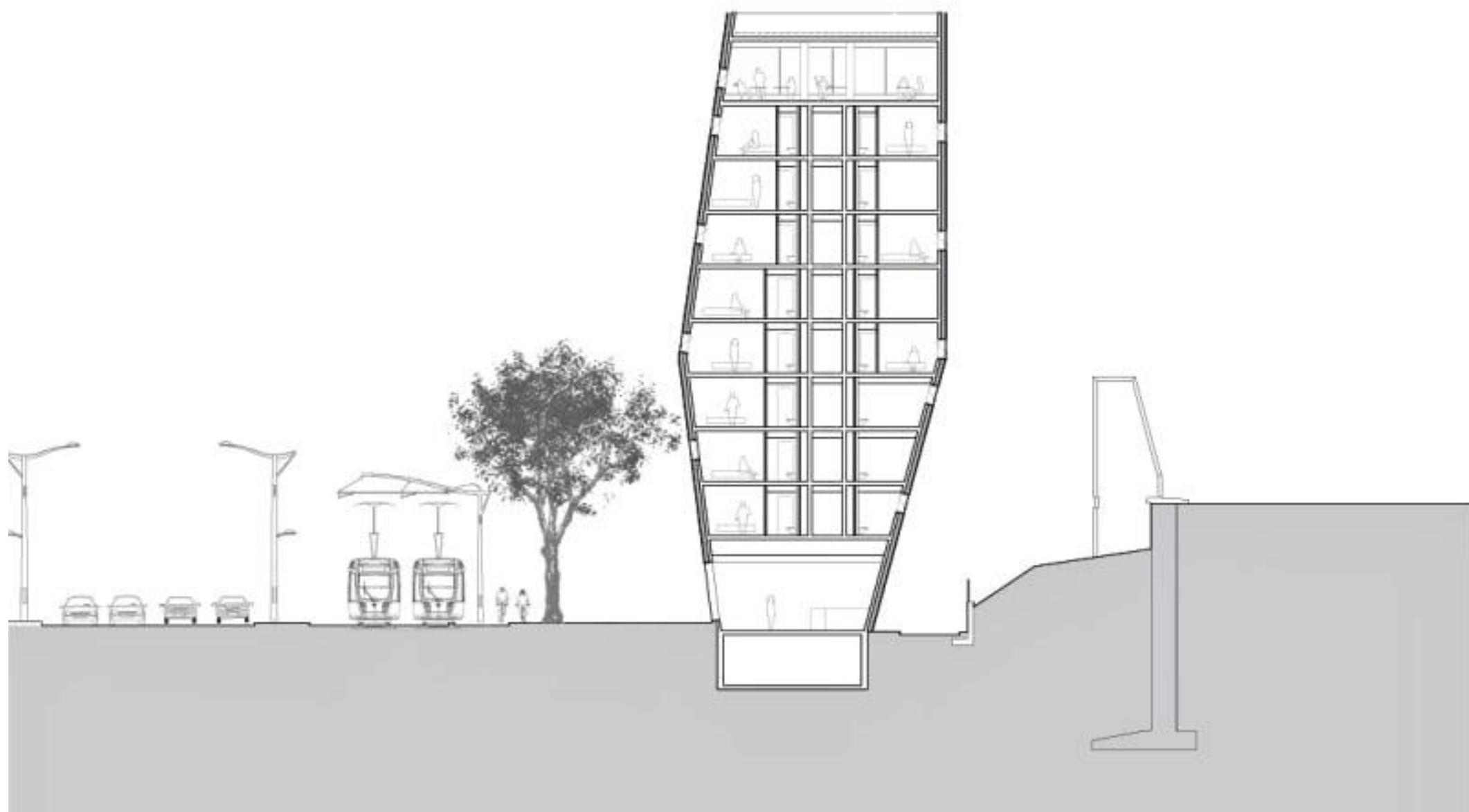
Urban environment

Housing building

Ring road



- SITE
- Spatial restrictions
- Challenging site
- Tapered form

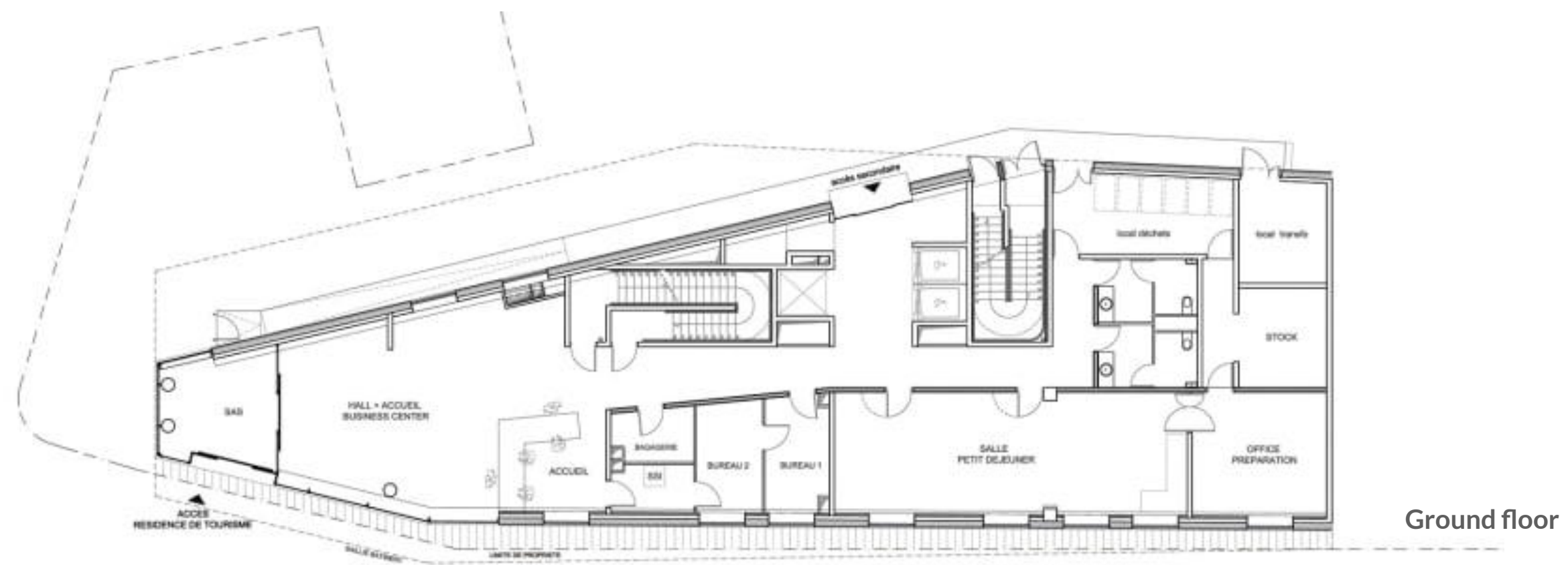


## ORGANISATION

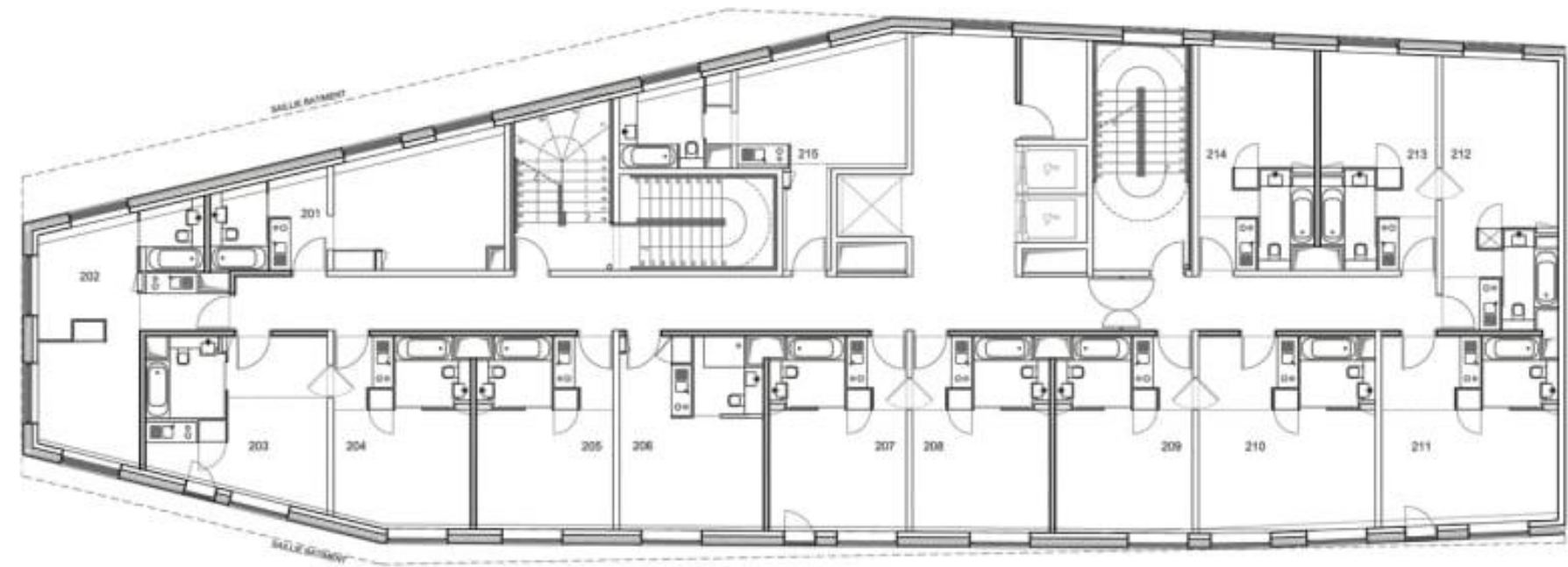
inclined planes

Variation of levels size

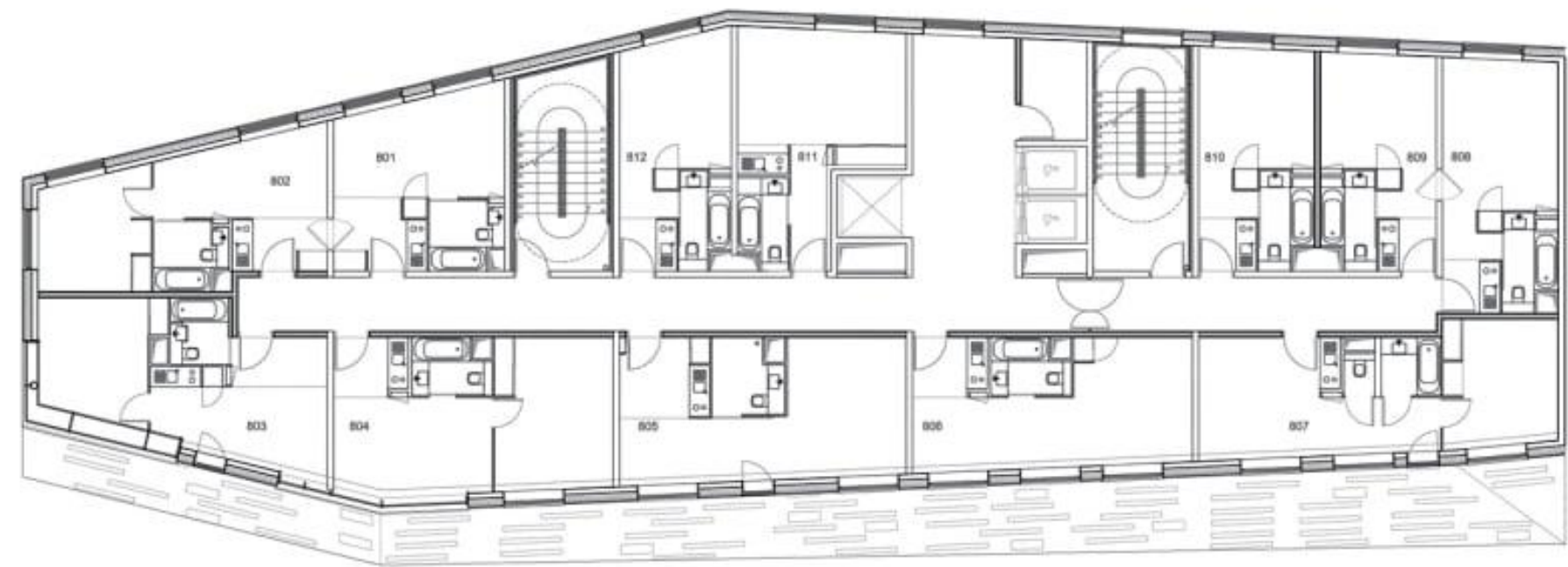
10 levels



Ground floor



Third floor



Fifth floor

ORGANISATION  
 vertical circulation  
 central corridor  
 orientation of the rooms/studios



TAIPEI

# Taiwan

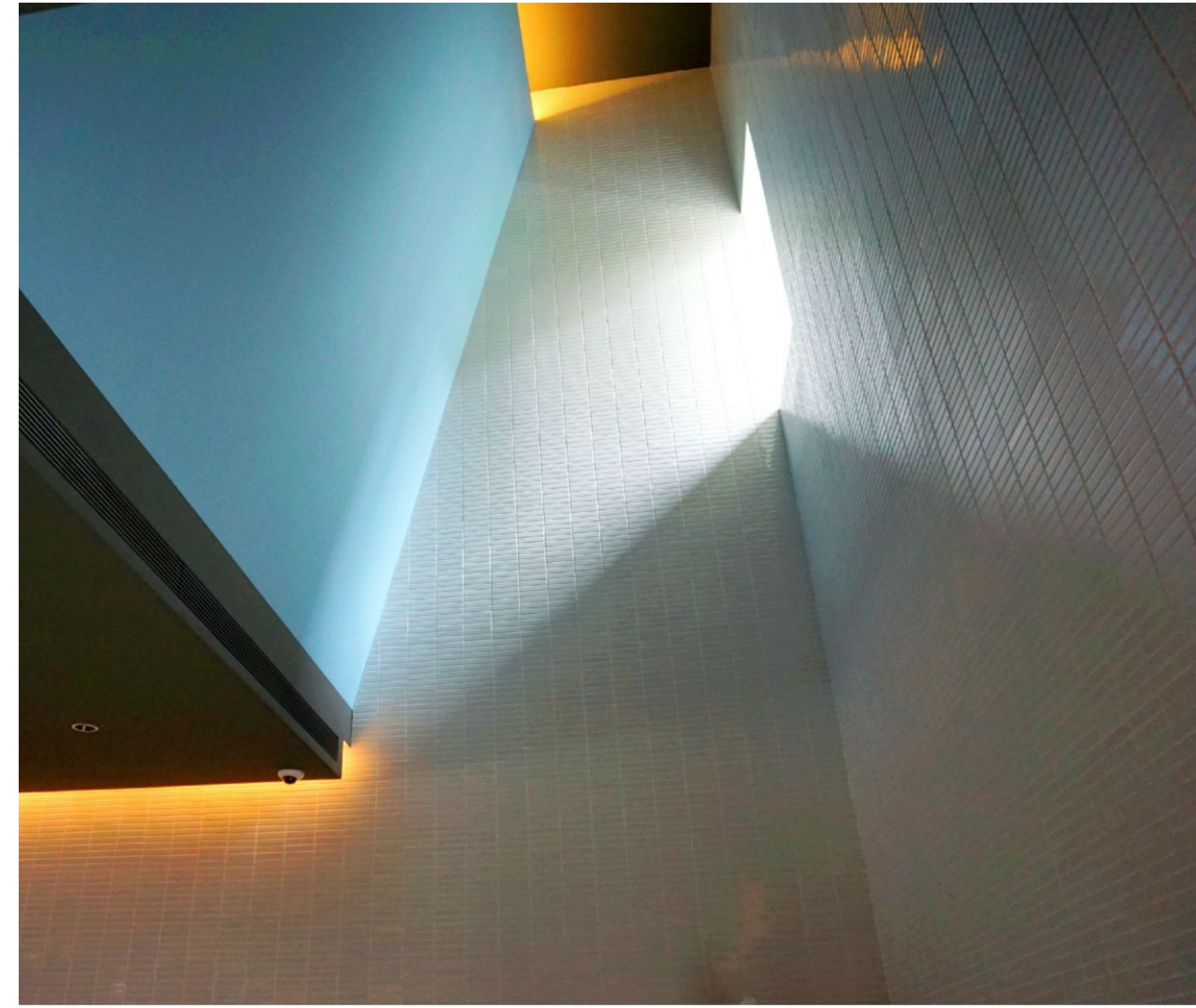
KIMPTON DA AN HOTEL



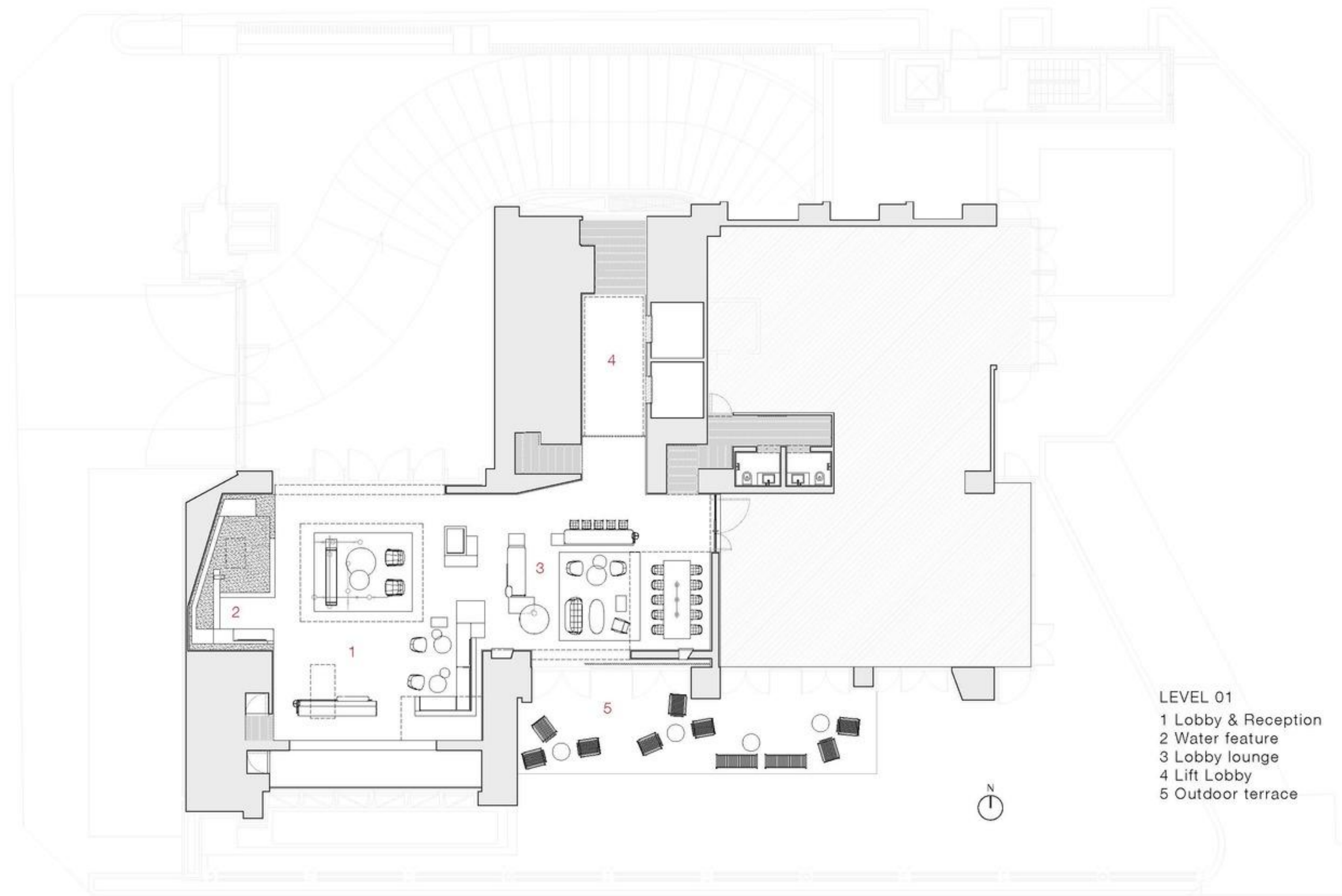
Da-An District, Taipei



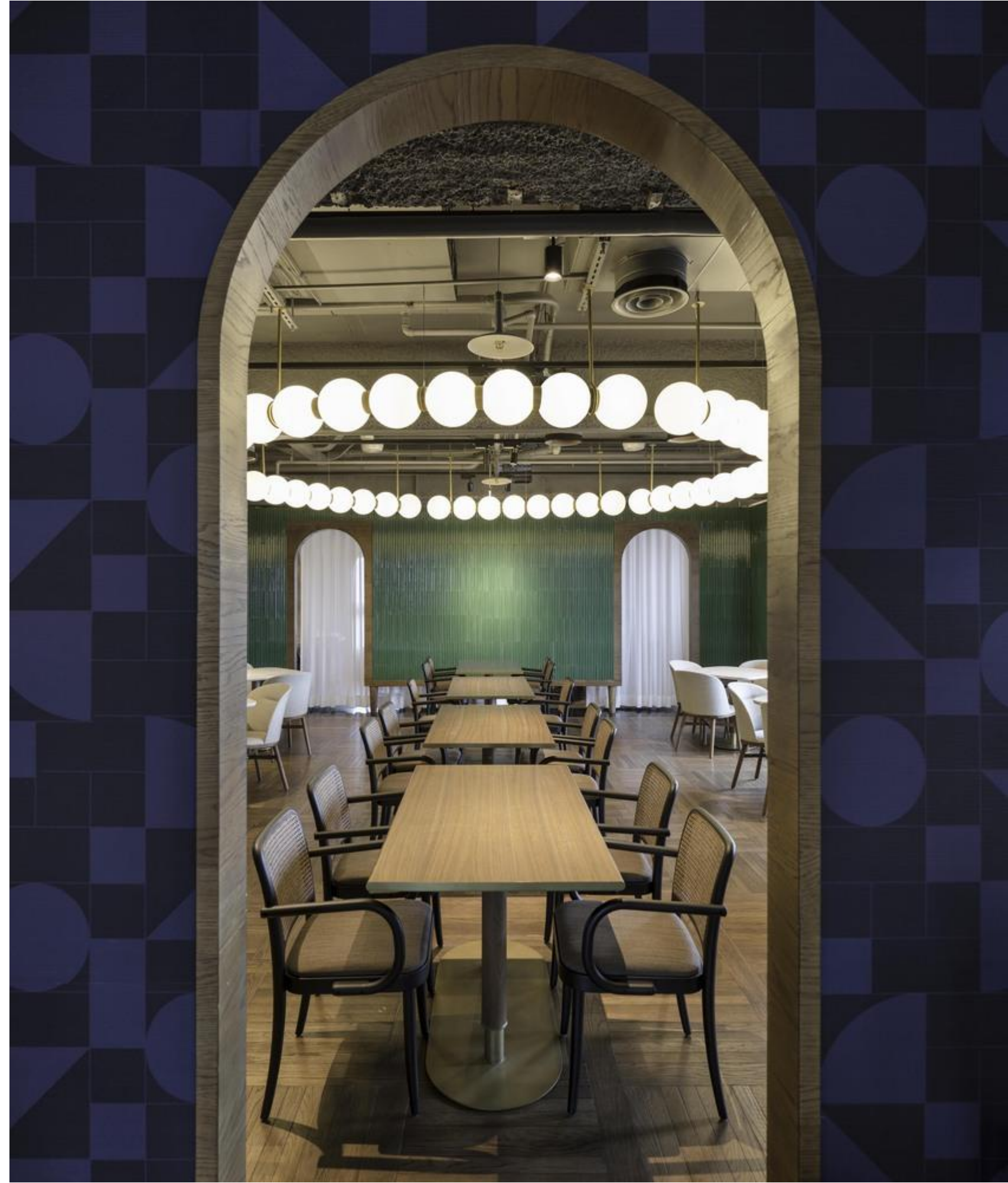
Kimpton DaAn Hotel  
Taipei, Taiwan  
Architect: Neri&Hu Design and Research Office  
Area: 520 m<sup>2</sup>/8000 m<sup>2</sup>  
Year: 2019

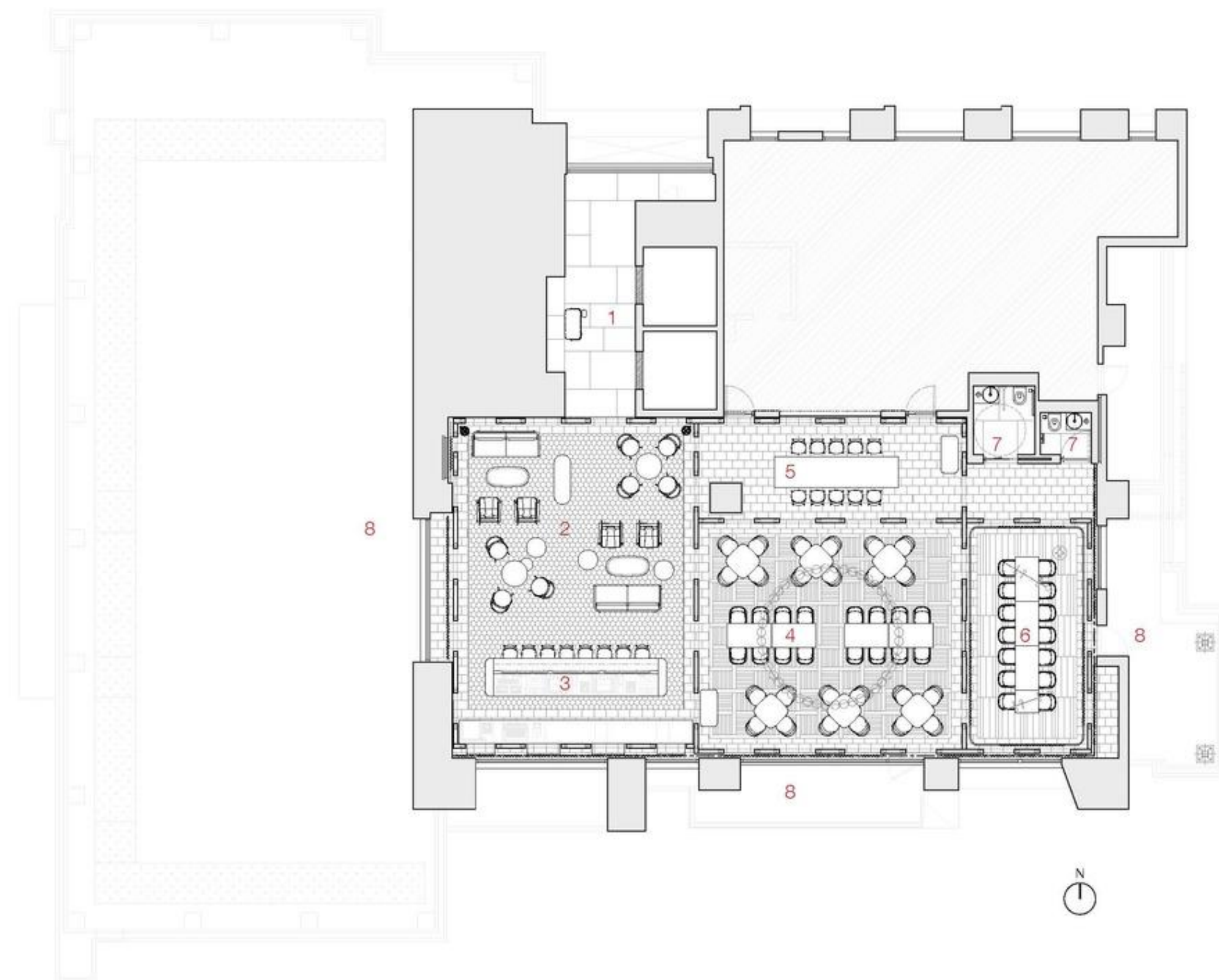






- LEVEL 01
- 1 Lobby & Reception
  - 2 Water feature
  - 3 Lobby lounge
  - 4 Lift Lobby
  - 5 Outdoor terrace



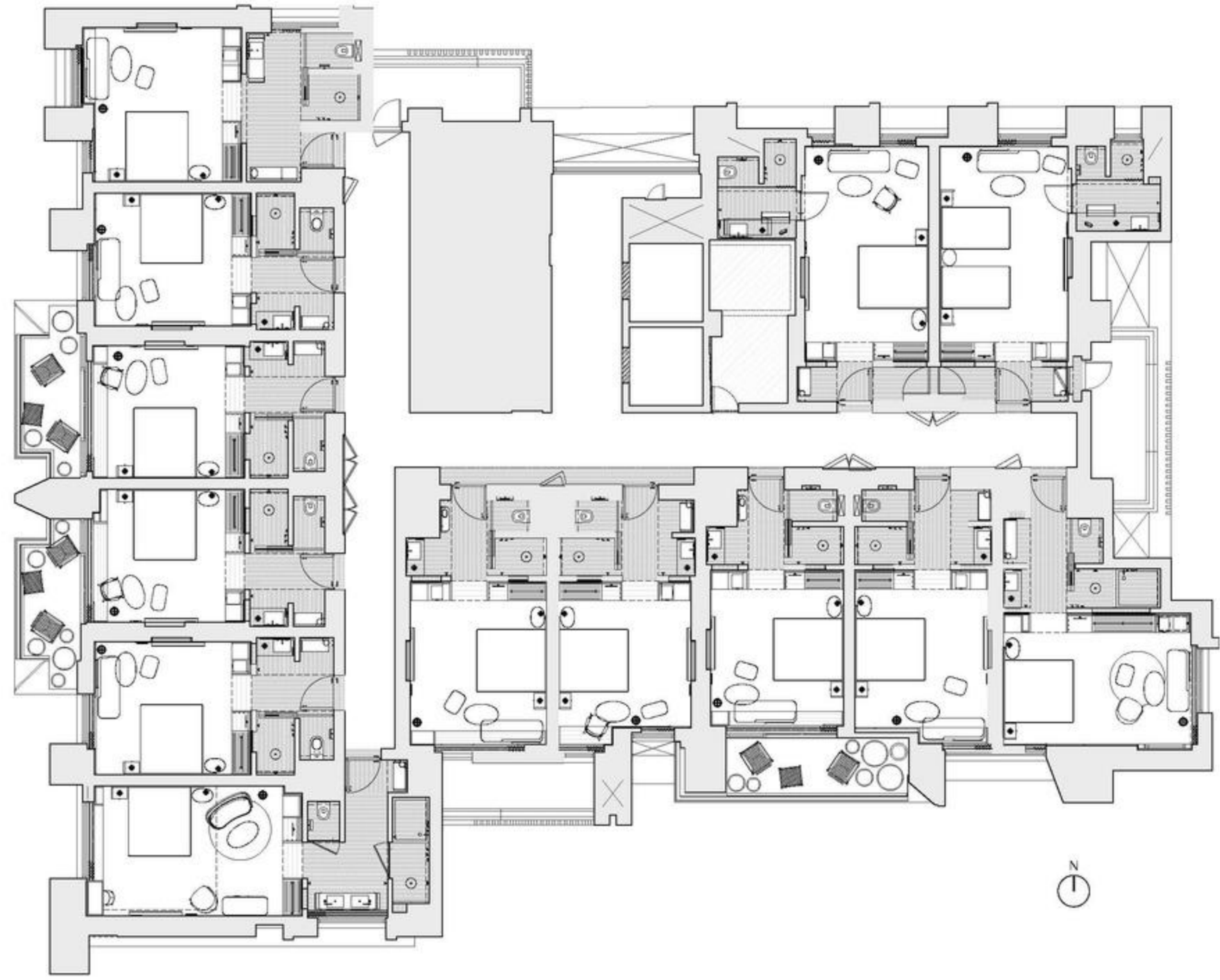


LEVEL 12

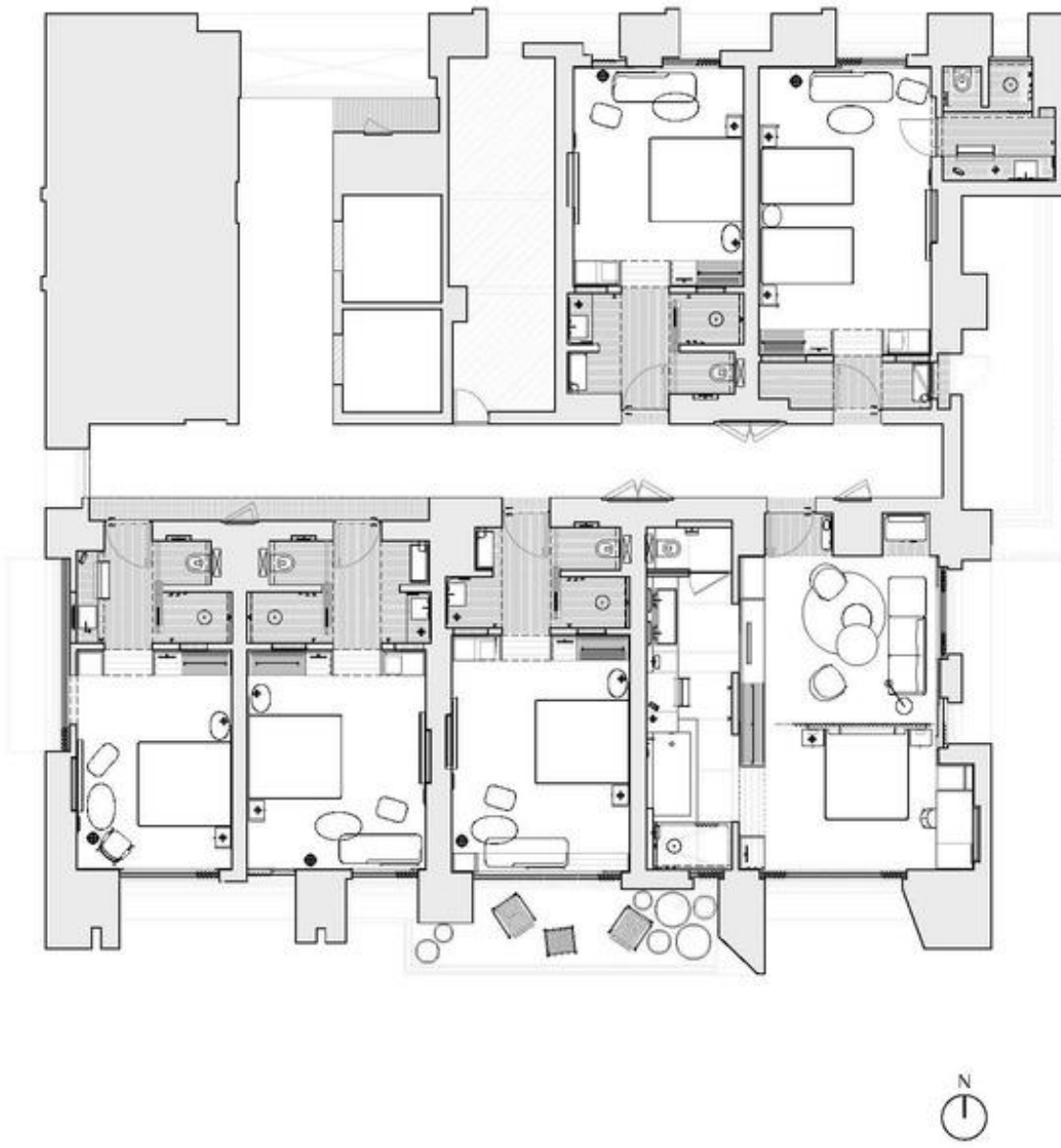
- 1 Lobby & Reception
- 2 Lounge
- 3 Bar
- 4 Main dining
- 5 Chef/display table
- 6 PDR
- 7 WC
- 8 Outdoor terrace/balcony







TYPICAL GUESTROOM FLOOR



TYPICAL SUITES FLOOR



ISTANBUL

Turkey

WORKINN HOTEL



**Project name:** Hotel 'Workinn'  
**Year :** 2012  
**Location :** Gebze  
**Architect:** Uyar Group

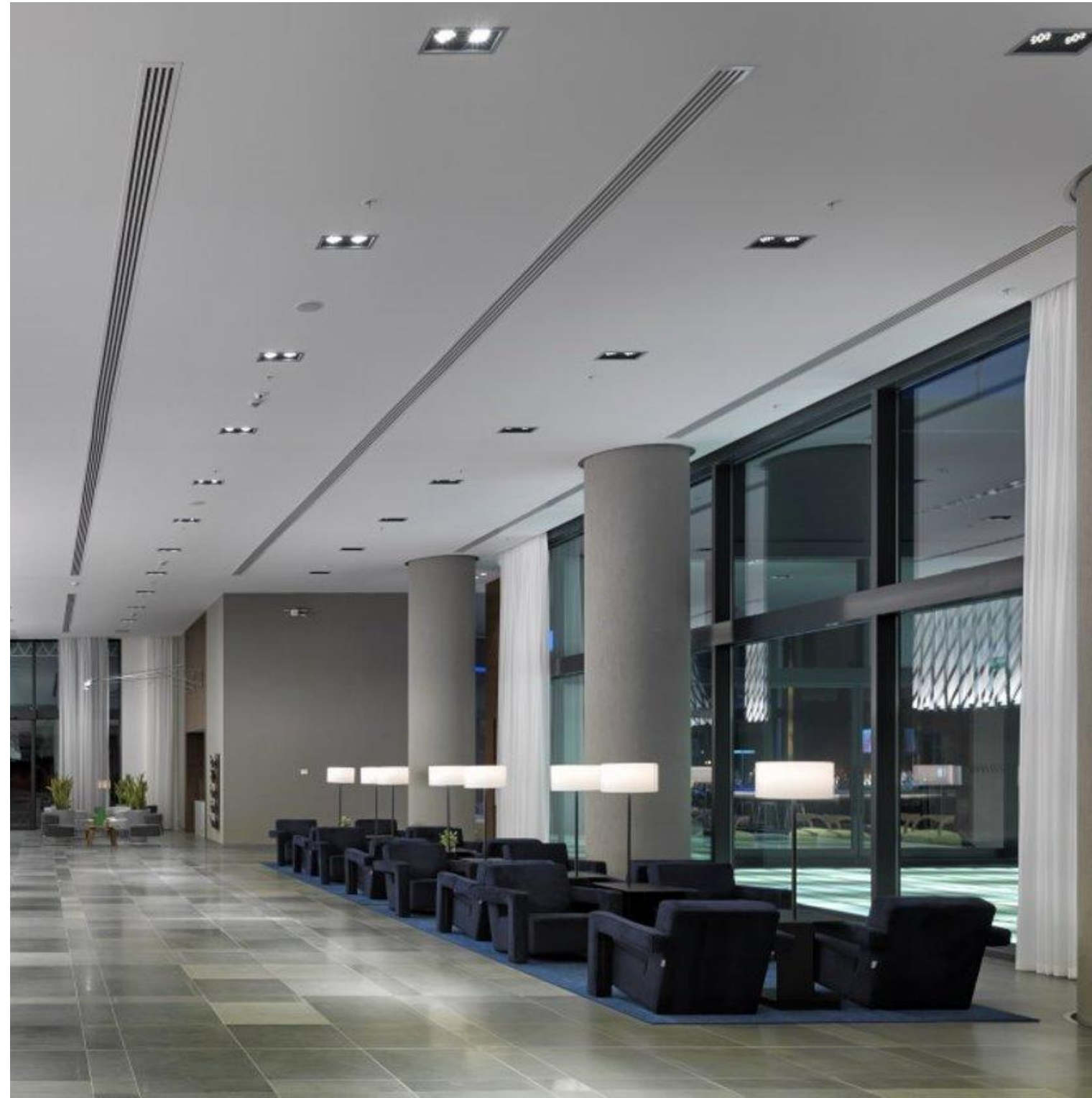
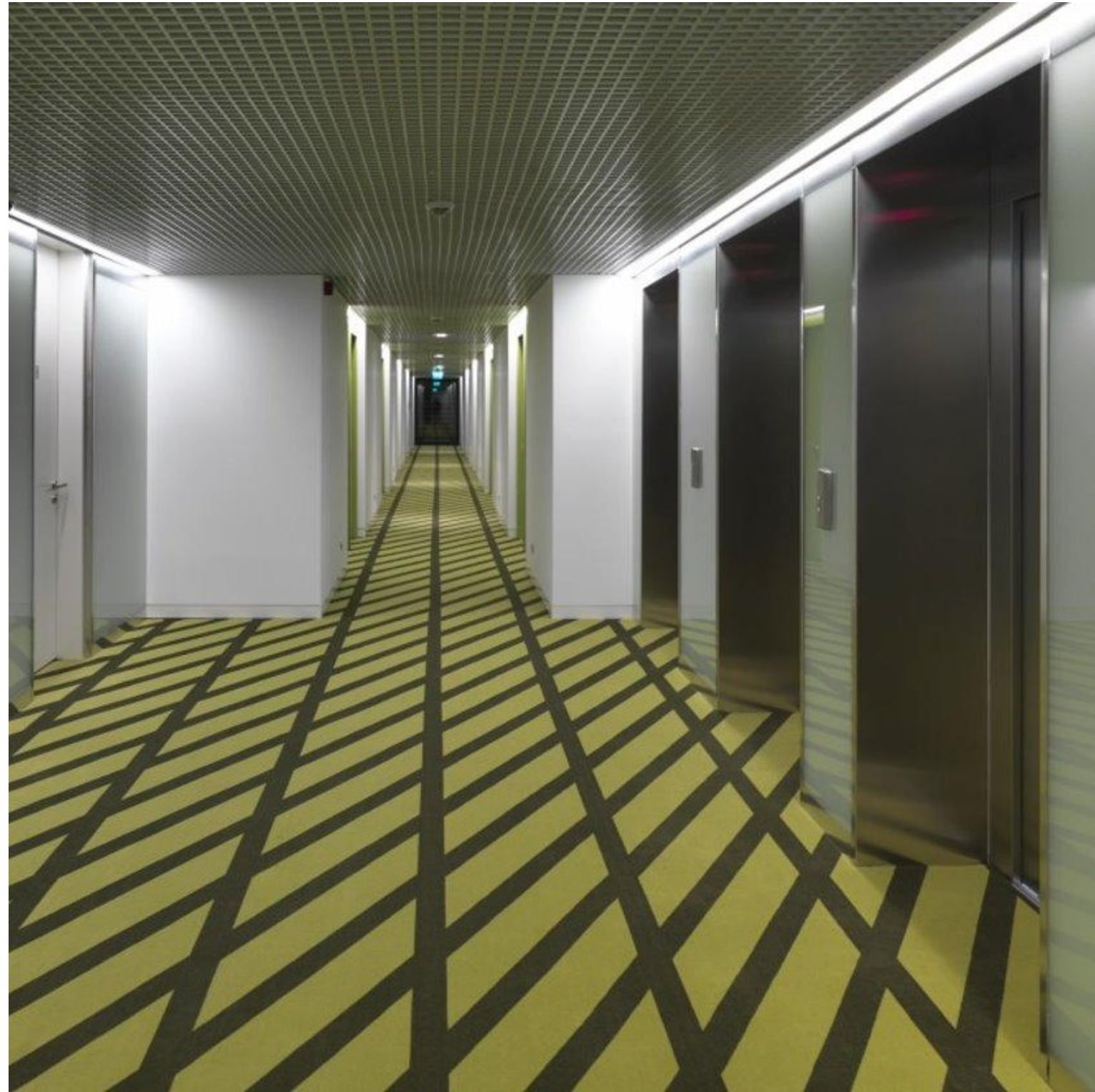




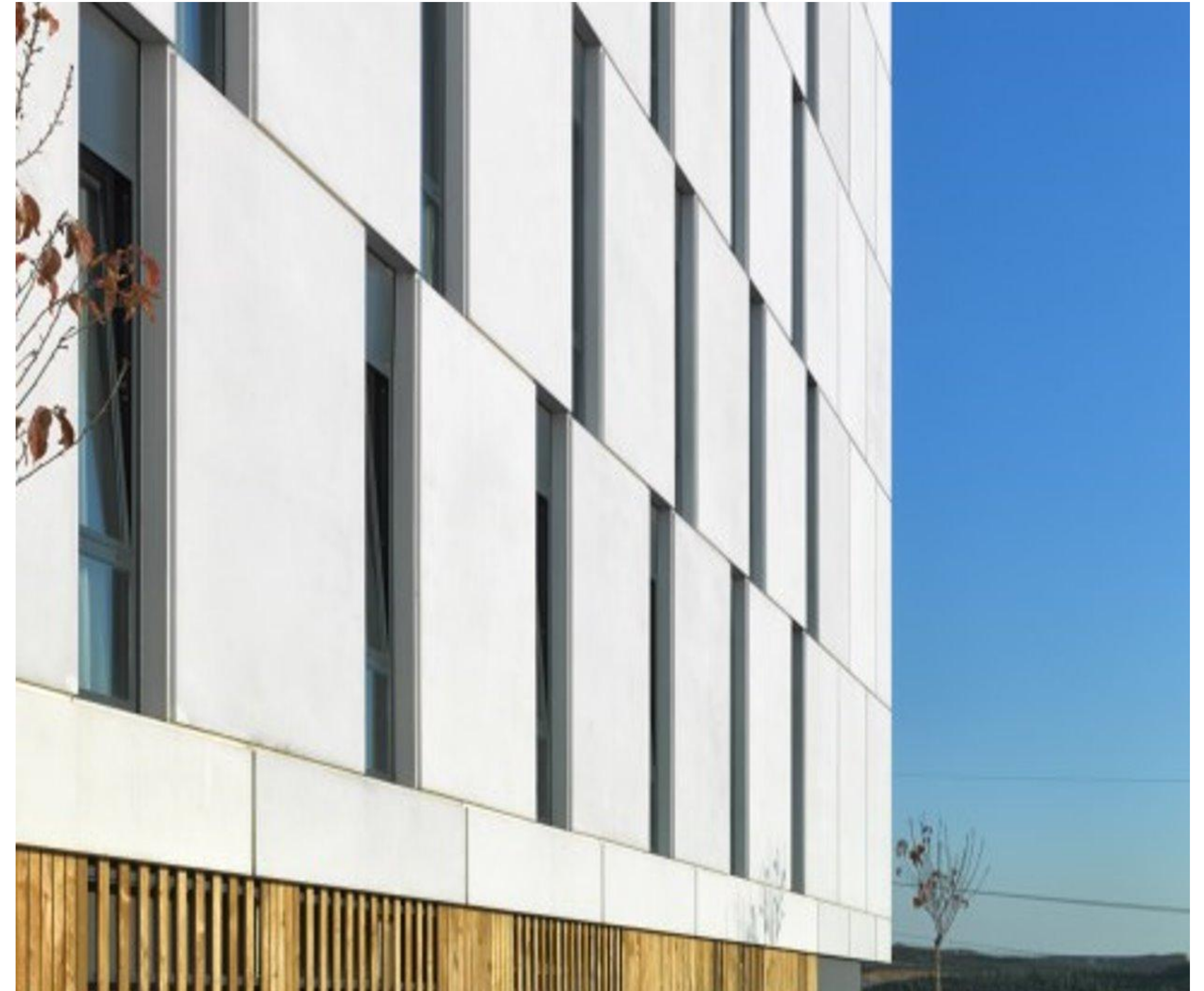
- Organized Industrial Zone
- 162 rooms, 251 beds capacity
- 12 m<sup>2</sup> construction area
- HIP-Business Hotel



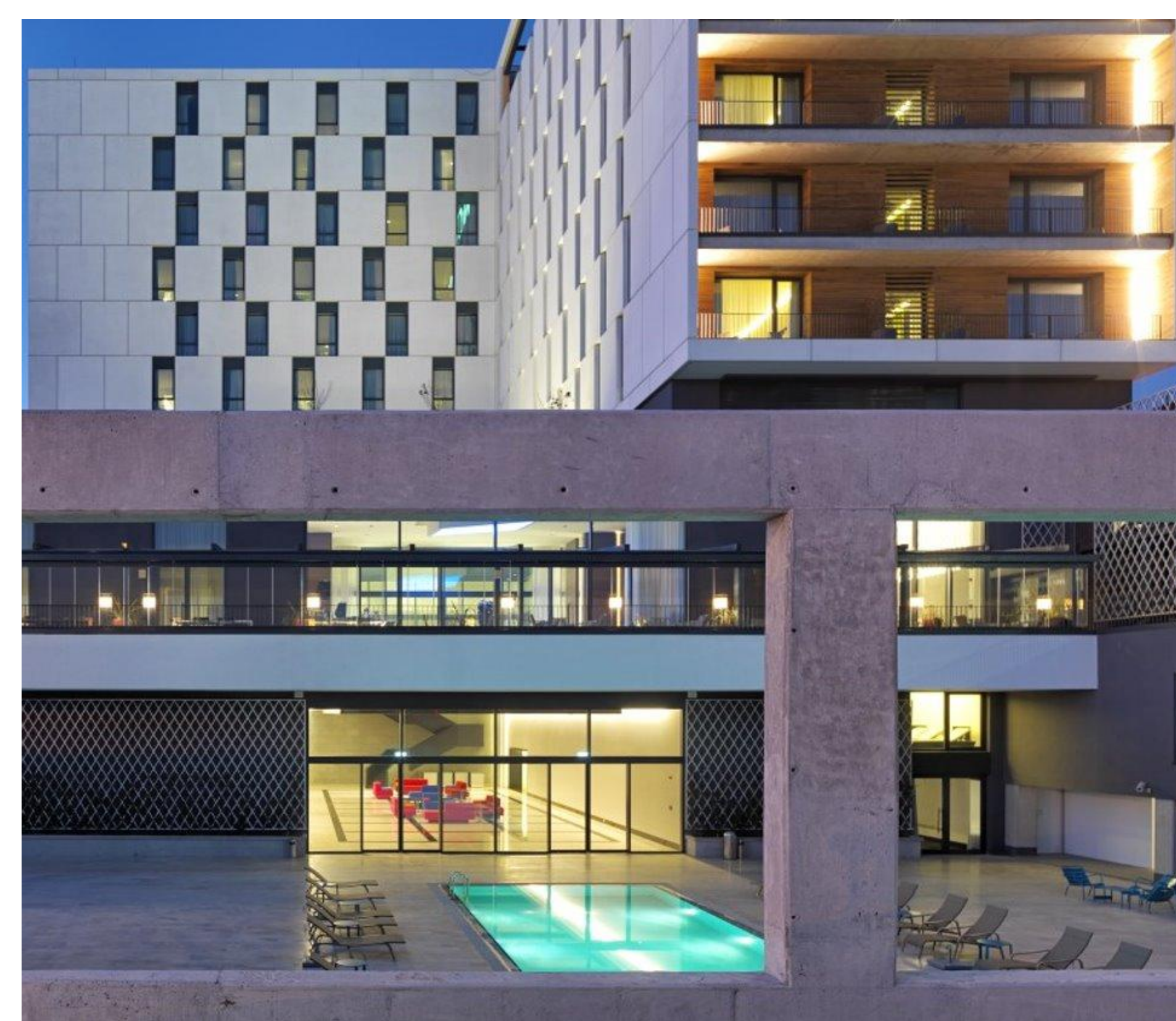
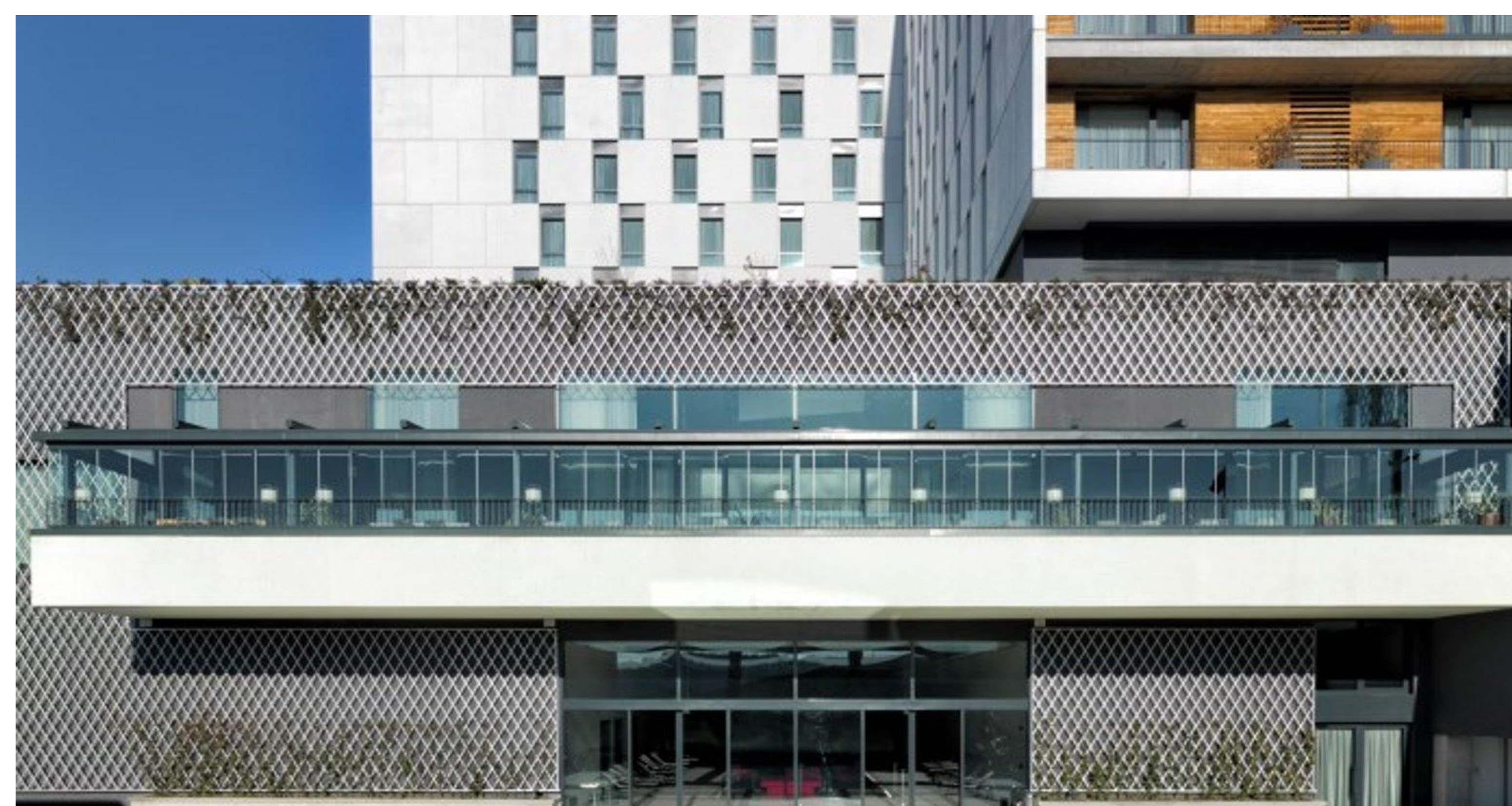
Stopover  
Temporary Accommodation  
Access from highway



Mainly composed of hybridization of two parts:  
Social spaces (lobby, pub-restaurant, meeting rooms, pool etc.)  
Two floor L shaped base enabling plant growth on it  
Different room typologies + Long term housing suggestions  
Standard / Executive / Apart + Residential Units with +1 rooms



Concept and Facade Organization



Environmentally Friendly

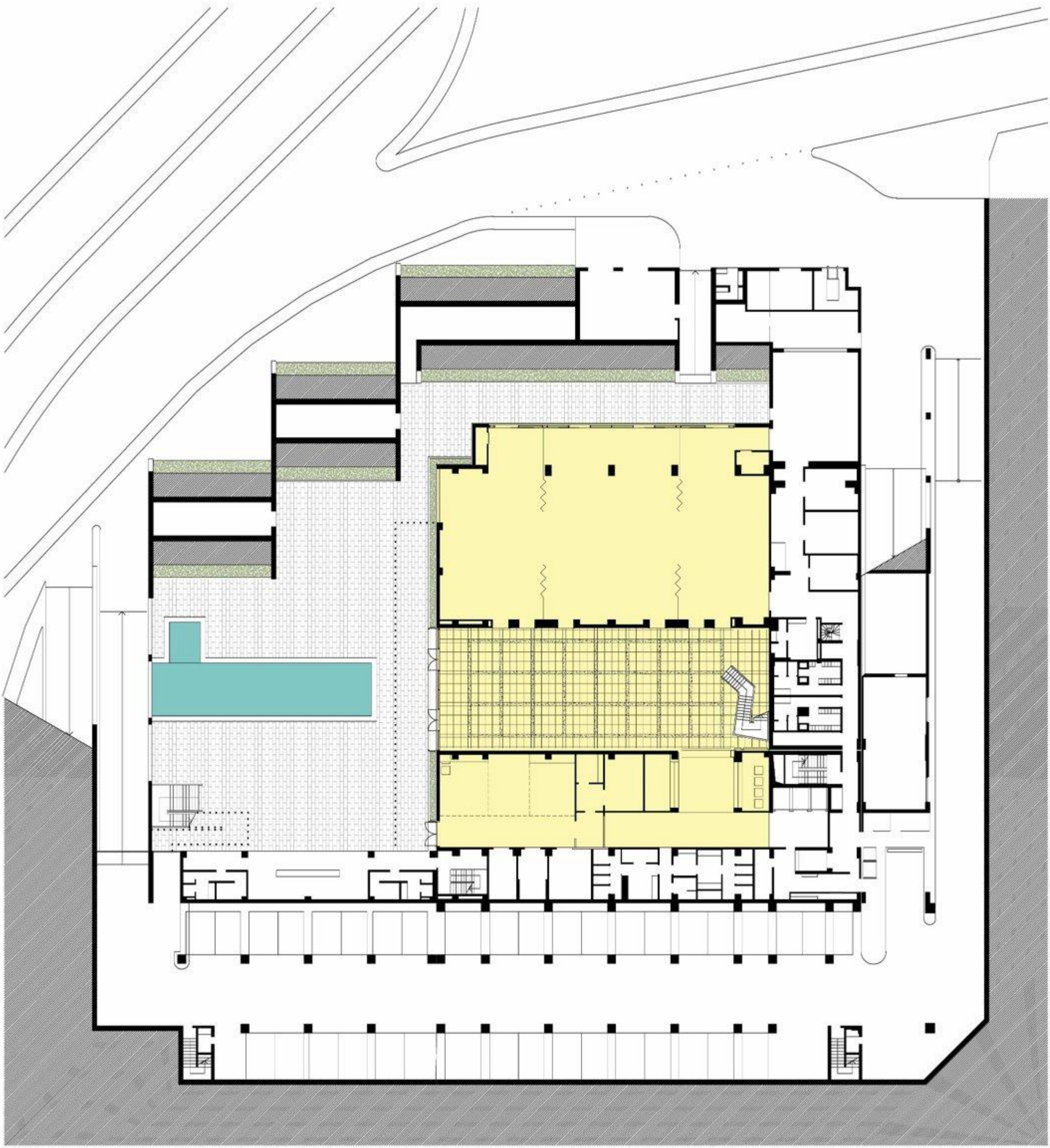


Environmentally Friendly

In order to reduce heat in roofs and hard landscape, materials which have higher reflection rates are used .

# Basement Floor Plan

In order to increase the green areas car parking area is planned in the basement. So that %20 of the land is used as green space.



In order to save rain water and to feed underground water sources, the water collected on site is being used as landscape irrigation source.

%90 of the construction waste produced is utilized.

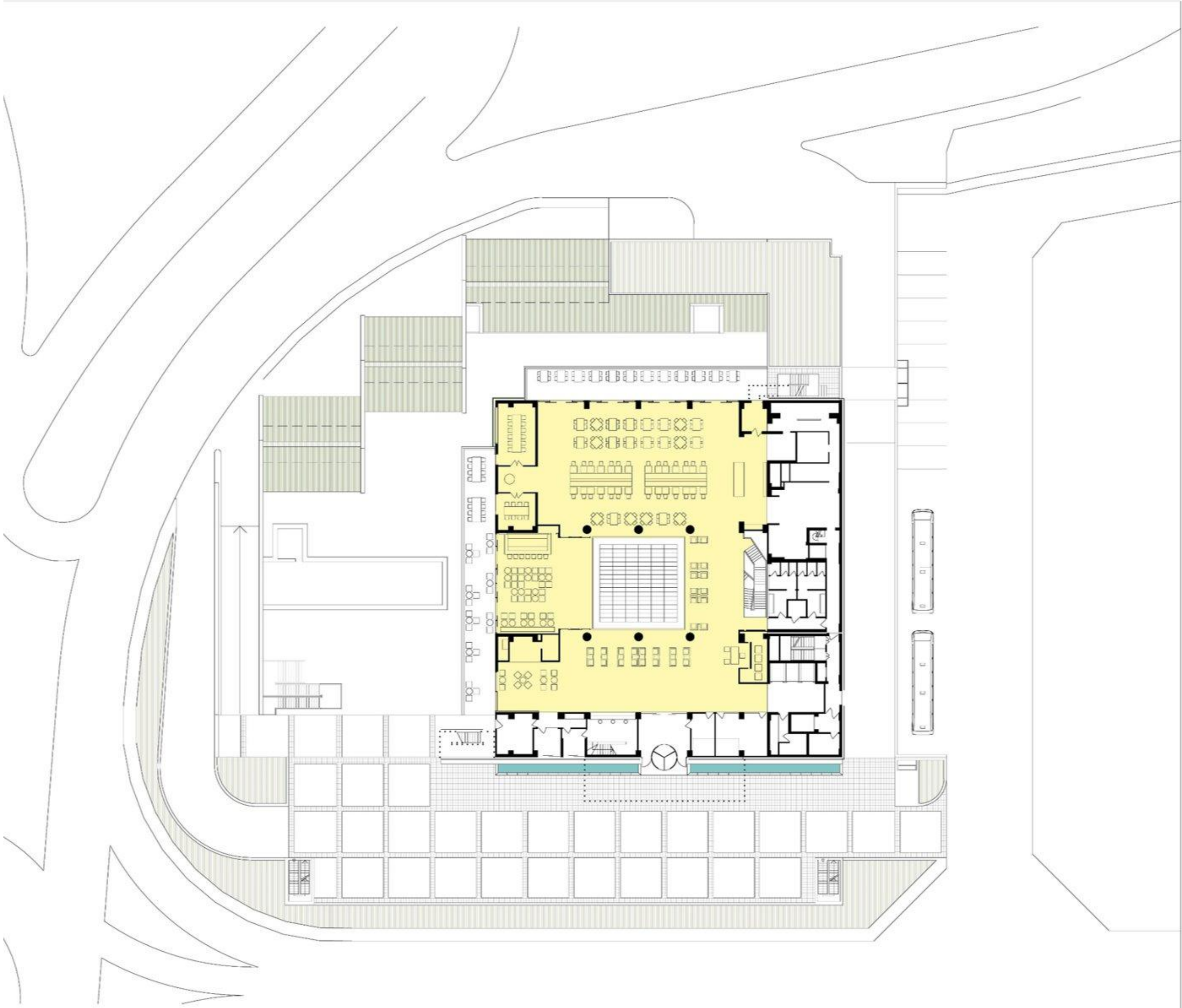
%15 of the materials which are used in construction is re-cycled.

Energy costs are reduced by %22 with the usage of energy efficient systems such as: natural lighting and natural cross ventilation, low-e glass use, solar water heating, use of highly efficient lighting fixtures, and use of %30 increased heat transmission coefficient for the walls etc.

No CFC based heating or cooling is used in order to prevent damage to ozone layer.



# Ground Floor Plan



10 m

Typical Room Plan Layout

